

## Canvas Login

Enter <https://umc.instructure.com> in the browser.

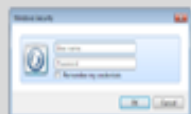
Username = UMMC email address

Example: jdoe@umc.edu

Password = UMMC password



*Off campus, Internet Explorer users may see a second prompt. Reenter login and click OK.*



*Note: If bookmarking or saving a shortcut, save after logging into Canvas and see the Canvas url <https://umc.instructure.com>*

\*\*\*\*\* IMPORTANT LOGOUT INSTRUCTIONS \*\*\*\*\*

-Close all browser windows.

-When using a UMC computer, be sure to log off.

## Need to Reset your UMMC Password?

Go to

<https://passwordcentral.umc.edu> or

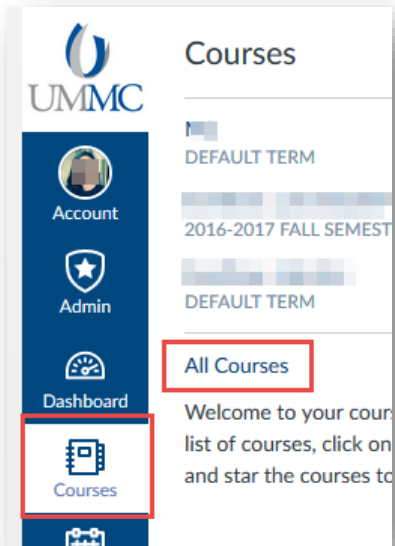
<https://password.umc.edu/CAS/index.jsp>

- Be sure to update any stored passwords and mobile devices.
- If you enter the wrong password three times your account may be locked. Wait one hour to retry.

If case you are still unable to log in Canvas contact the [Service Desk](#) at 601-984-1145.

## Locate Canvas Courses

1. In Canvas, click **Courses** located on the far left side global navigation menu.
2. Click **All Courses** on the pop out menu to view a complete list of courses.



## Internet Browser

You will need to use one of the latest two versions of internet browsers when using Canvas.

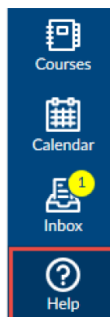
As of September 22, 2017 supported browsers are

- [Firefox](#) 54 and 55 (extended releases are not supported)
- Internet Explorer 11 and Edge 39 and 40 (If using Windows 10 please see [computer specifications](#))
- [Chrome](#) 60 and 61
- Safari 9 and 10 (Macintosh only)

For more latest information of supported browsers and computer specifications see the Canvas Guides for [Which borwsers does Canvas support?](#)

Flash 26 and 27 (for recording or viewing audio/video and uploading files)

## Help is available!



Click **Help** on the far left side global navigation menu and select **Search Canvas Guides**

Step by step instructions are available.